

## 二酮配体 相关产品



1033902  
CAS: 504-02-9

现货



1016629  
CAS: 110-13-4

现货



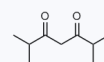
1053390  
CAS: 874-23-7

现货



1030976  
CAS: 367-57-7

现货



1024250  
CAS: 18362-64-8

现货



1034466  
CAS: 520-45-6

现货



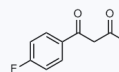
1031661  
CAS: 39207-65-3

现货



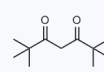
1166468  
CAS: 5910-25-8

现货



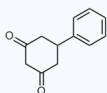
1131498  
CAS: 29681-98-9

现货



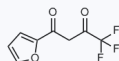
1016983  
CAS: 1118-71-4

现货



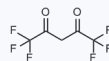
1062156  
CAS: 493-72-1

现货



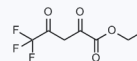
1029647  
CAS: 326-90-9

现货



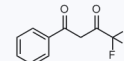
1022275  
CAS: 1522-22-1

现货



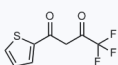
1167986  
CAS: 893643-18-0

现货



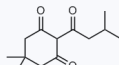
1029618  
CAS: 326-06-7

现货



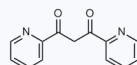
1029650  
CAS: 326-91-0

现货



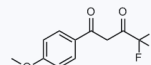
1068966  
CAS: 172611-72-2

现货



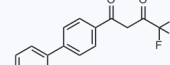
1166176  
CAS: 10198-89-7

现货



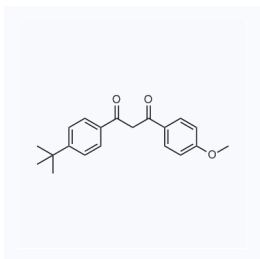
1134533  
CAS: 15191-68-1

现货

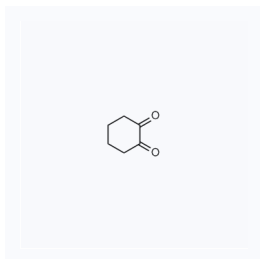


1165133  
CAS: 581-83-9

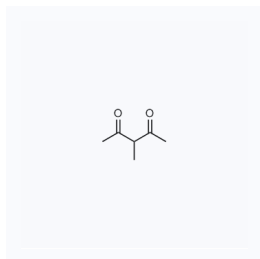
现货



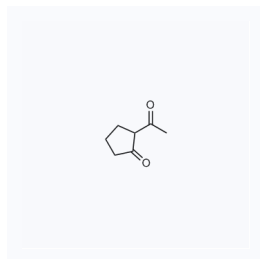
1040389 现货  
CAS: 70356-09-1



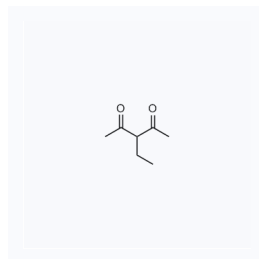
1042505  
CAS: 765-87-7



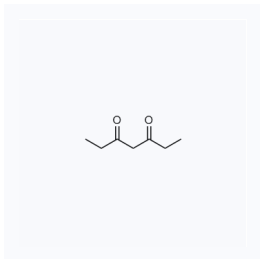
1166484  
CAS: 815-57-6



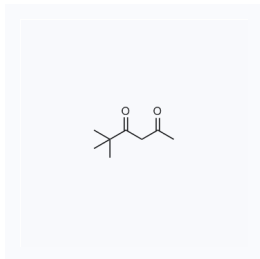
1023250  
CAS: 1670-46-8



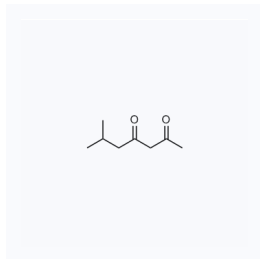
1166227  
CAS: 1540-34-7



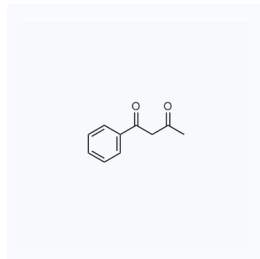
1041200  
CAS: 7424-54-6



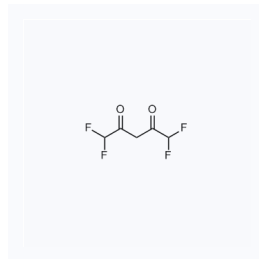
1040992  
CAS: 7307-04-2



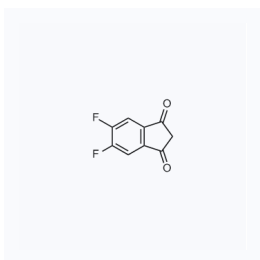
1166394  
CAS: 3002-23-1



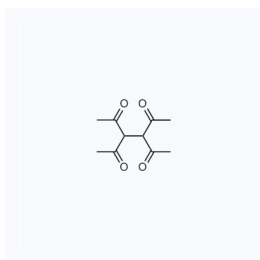
1047036  
CAS: 93-91-4



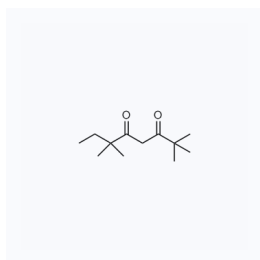
1166478  
CAS: 70086-62-3



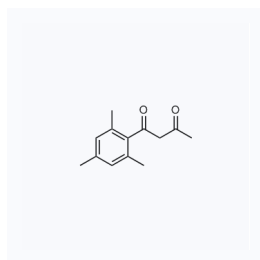
1167558  
CAS: 1454686-04-4



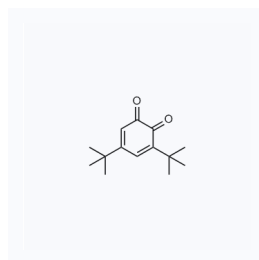
1166427  
CAS: 5027-32-7



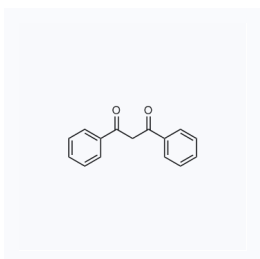
1157516  
CAS: 78579-61-0



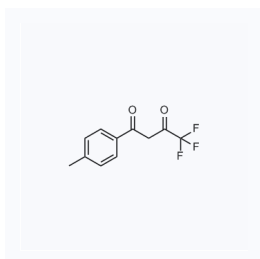
1038993  
CAS: 6450-57-3



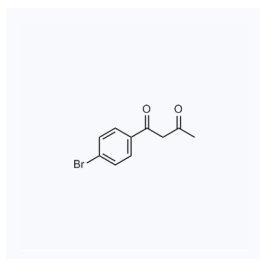
1166399  
CAS: 3383-21-9



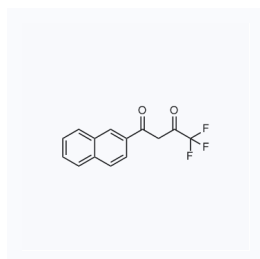
1018120  
CAS: 120-46-7



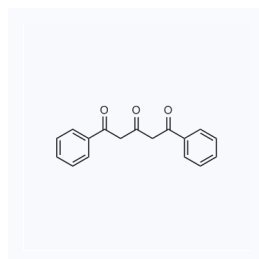
1112480  
CAS: 720-94-5



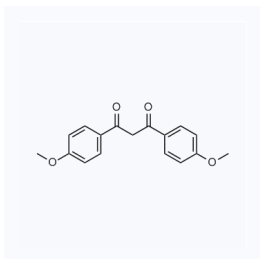
1166408  
CAS: 4023-81-8



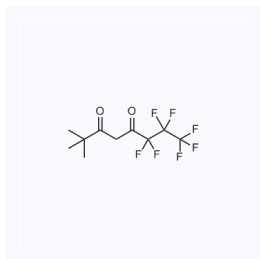
1045791  
CAS: 893-33-4



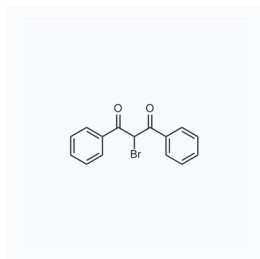
1157050  
CAS: 1467-40-9



1024249  
CAS: 18362-51-1



1023864  
CAS: 17587-22-3



1169171  
CAS: 728-84-7

## 上海皓鸿生物医药科技有限公司

电话: 400-8210-725

邮箱: product@leyan.com

地址: 上海市浦东新区张衡路1999弄3号楼

乐研的所有产品仅用作科学研究, 我们不为任何个人用途提供产品和服务

扫码关注乐研公众号

