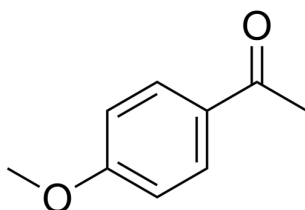


## Certificate of Analysis

### Compound Information

|                            |                                               |
|----------------------------|-----------------------------------------------|
| <b>Product Name:</b>       | 1-(4-Methoxyphenyl)ethanone                   |
| <b>Cat. No.:</b>           | 1014483                                       |
| <b>CAS No.:</b>            | 100-06-1                                      |
| <b>Molecular Formula:</b>  | C <sub>9</sub> H <sub>10</sub> O <sub>2</sub> |
| <b>Molecular Weight:</b>   | 150.17                                        |
| <b>Chemical Structure:</b> |                                               |



### Batch Information

|                     |                           |
|---------------------|---------------------------|
| <b>Batch No.:</b>   | La1024242                 |
| <b>Storage:</b>     | Store at room temperature |
| <b>Mfg. Date:</b>   | 2017-11-08                |
| <b>Retest Date:</b> | 2022-11-07                |
| <b>Origin:</b>      | Shanghai, China           |

### QC Summary

|                                    |                                                                         |
|------------------------------------|-------------------------------------------------------------------------|
| <b>Appearance:</b>                 | White to off-white (Solid)                                              |
| <b><sup>1</sup>H NMR Spectrum:</b> | Consistent with structure                                               |
| <b>Purity (NMR):</b>               | ≥98.0%                                                                  |
| <b>Conclusion:</b>                 | The product has been tested and complies with the given specifications. |

**Caution: Research use only and are not intended for human use.**

Tel: 400-821-0725

E-mail: [product@leyan.com](mailto:product@leyan.com)

Address: No. 1999 Zhangheng Road, Building 3, Zhangjiang High-Tech Park, Shanghai