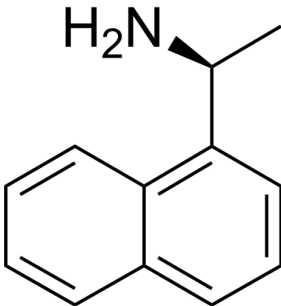
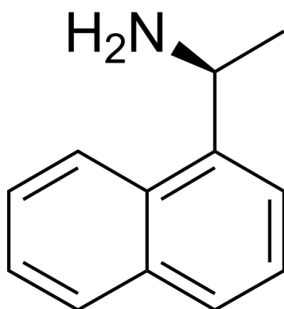


Certificate of Analysis

Compound Information

| | |
|----------------------------|---|
| Product Name: | (S)-(-)-1-(1-Naphthyl)ethylamine |
| Cat. No.: | 1015533 |
| CAS No.: | 10420-89-0 |
| Molecular Formula: | C ₁₂ H ₁₃ N |
| Molecular Weight: | 171.23832 |
| Chemical Structure: |  |



Batch Information

| | |
|---------------------|---------------------------|
| Batch No.: | Le022451894 |
| Storage: | 2-8°C, protect from light |
| Test Date: | 2016-08-19 |
| Retest Date: | 2022-08-18 |
| Origin: | Shanghai, China |

QC Summary

| | |
|-----------------------|---|
| Appearance: | Light yellow to yellow (Liquid) |
| Purity (HPLC): | 99.90% |
| Conclusion: | The product has been tested and complies with the given specifications. |

Caution: Research use only and are not intended for human use.

Tel: 400-821-0725

E-mail: product@leyan.com

Address: No. 1999 Zhangheng Road, Building 3, Zhangjiang High-Tech Park, Shanghai