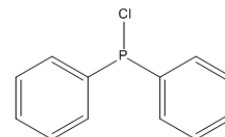


## CAS: 1079-66-9

Cat. No.:	1016207
CAS No.:	1079-66-9
English Name:	Chlorodiphenylphosphine
Chinese Name:	氯代二苯基磷
Synonym:	Chlorodiphenylphosphine; Diphenylchlorophosphine; Diphenylphosphine chloride; Diphenylphosphorus chloride; NSC 60407; Phosphine, chlorodiphenyl-
Purity:	0.98
Storage:	4°C, stored under nitrogen
Molecular Formula:	C <sub>12</sub> H <sub>10</sub> ClP
Molecular Weight:	220.63
Smiles Code:	ClP(C1=CC=CC=C1)C2=CC=CC=C2
Boiling Points:	320°C at 760 mmHg



Pictogram:



GHS Code:	GHS05
Hazard Statements:	H314
Precautionary:	P280-P305+P351+P338-P310

Packing Group: II

UN Code: 3265

Class: 8

### 上海皓鸿生物医药科技有限公司

电话: 400-8210-725

邮箱: product@leyan.com.cn

地址: 上海市浦东新区张衡路1999弄3号楼

乐研的所有产品仅用作科学研究, 我们不为任何个人用途提供产品和服务

扫码关注乐研公众号

