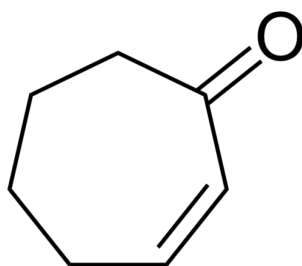


## Certificate of Analysis

### Compound Information

|                            |                                  |
|----------------------------|----------------------------------|
| <b>Product Name:</b>       | Cyclohept-2-enone                |
| <b>Cat. No.:</b>           | 1017075                          |
| <b>CAS No.:</b>            | 1121-66-0                        |
| <b>Molecular Formula:</b>  | C <sub>7</sub> H <sub>10</sub> O |
| <b>Molecular Weight:</b>   | 110.15                           |
| <b>Chemical Structure:</b> |                                  |



### Batch Information

|                     |                              |
|---------------------|------------------------------|
| <b>Batch No.:</b>   | Le042869074                  |
| <b>Storage:</b>     | -20°C, stored under nitrogen |
| <b>Mfg. Date:</b>   | 2021-04-29                   |
| <b>Retest Date:</b> | 2024-04-28                   |
| <b>Origin:</b>      | Shanghai, China              |

### QC Summary

|                                    |   |
|------------------------------------|---|
| <b>Appearance:</b>                 | Colorless to light yellow (Liquid)                                      |
| <b><sup>1</sup>H NMR Spectrum:</b> | Consistent with structure   |
| <b>Purity (GC):</b>                | 90.28%  |
| <b>Conclusion:</b>                 | The product has been tested and complies with the given specifications. |

Caution: Research use only and are not intended for human use.

Tel: 400-821-0725

E-mail: [product@leyan.com](mailto:product@leyan.com)

Address: No. 1999 Zhangheng Road, Building 3, Zhangjiang High-Tech Park, Shanghai