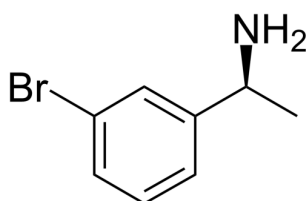


## Certificate of Analysis

### Compound Information

|                            |                                    |
|----------------------------|------------------------------------|
| <b>Product Name:</b>       | (S)-1-(3-bromophenyl)ethan-1-amine |
| <b>Cat. No.:</b>           | 1020918                            |
| <b>CAS No.:</b>            | 139305-96-7                        |
| <b>Molecular Formula:</b>  | C <sub>8</sub> H <sub>10</sub> BrN |
| <b>Molecular Weight:</b>   | 200.08                             |
| <b>Chemical Structure:</b> |                                    |



### Batch Information

|                     |                           |
|---------------------|---------------------------|
| <b>Batch No.:</b>   | Le020140422               |
| <b>Storage:</b>     | 2-8°C, protect from light |
| <b>Mfg. Date:</b>   | 2019-04-15                |
| <b>Retest Date:</b> | 2022-04-14                |
| <b>Origin:</b>      | Shanghai, China           |

### QC Summary

|                                    |   |
|------------------------------------|---|
| <b>Appearance:</b>                 | Colorless to light yellow (Liquid)                                      |
| <b><sup>1</sup>H NMR Spectrum:</b> | Consistent with structure   |
| <b>LCMS:</b>                       | Consistent with structure   |
| <b>Purity (LCMS):</b>              | 99.62%  |
| <b>Conclusion:</b>                 | The product has been tested and complies with the given specifications. |

**Caution: Research use only and are not intended for human use.**

Tel: 400-821-0725

E-mail: [product@leyan.com](mailto:product@leyan.com)

Address: No. 1999 Zhangheng Road, Building 3, Zhangjiang High-Tech Park, Shanghai