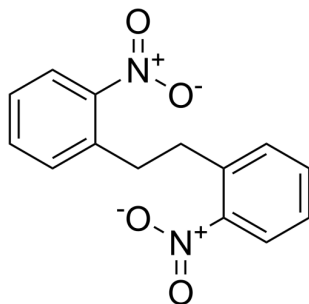


Certificate of Analysis

Compound Information

| | |
|----------------------------|---------------------------------------------------------------|
| Product Name: | 1,2-Bis(2-nitrophenyl)ethane |
| Cat. No.: | 1023450 |
| CAS No.: | 16968-19-7 |
| Molecular Formula: | C ₁₄ H ₁₂ N ₂ O ₄ |
| Molecular Weight: | 272.26 |
| Chemical Structure: | |



Batch Information

| | |
|---------------------|---------------------------|
| Batch No.: | Lf0325127995 |
| Storage: | Store at room temperature |
| Test Date: | 2022-03-25 |
| Retest Date: | 2027-03-24 |
| Origin: | Shanghai, China |

QC Summary

| | |
|------------------------------------|-------------------------------------------------------------------------|
| Appearance: | Yellow to brown (Solid) |
| ¹H NMR Spectrum: | Consistent with structure |
| Purity (HPLC): | 99.19% |
| Water(KF): | 0.68% |
| Residue on Ignition: | 0.10% |
| Conclusion: | The product has been tested and complies with the given specifications. |

Caution: Research use only and are not intended for human use.

Tel: 400-821-0725

E-mail: product@leyan.com

Address: No. 1999 Zhangheng Road, Building 3, Zhangjiang High-Tech Park, Shanghai