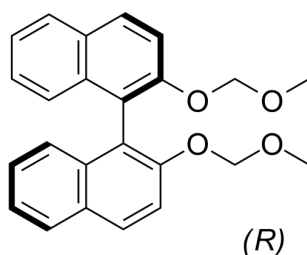


## Certificate of Analysis

### Compound Information

<b>Product Name:</b>	(R)-2,2'-Bis(methoxymethoxy)-1,1'-binaphthalene
<b>Cat. No.:</b>	1023725
<b>CAS No.:</b>	173831-50-0
<b>Molecular Formula:</b>	C <sub>24</sub> H <sub>22</sub> O <sub>4</sub>
<b>Molecular Weight:</b>	374.43
<b>Chemical Structure:</b>	



### Batch Information

<b>Batch No.:</b>	Lf0804158292
<b>Storage:</b>	2-8°C, protect from light, stored under nitrogen
<b>Mfg. Date:</b>	2022-08-06
<b>Retest Date:</b>	2025-08-05
<b>Origin:</b>	Shanghai, China

### QC Summary

<b>Appearance:</b>	White to off-white (Solid)
<b><sup>1</sup>H NMR Spectrum:</b>	Consistent with structure
<b>Purity (HPLC):</b>	98.30%
<b>Conclusion:</b>	The product has been tested and complies with the given specifications.

Caution: Research use only and are not intended for human use.

Tel: 400-821-0725

E-mail: product@leyan.com

Address: No. 1999 Zhangheng Road, Building 3, Zhangjiang High-Tech Park, Shanghai