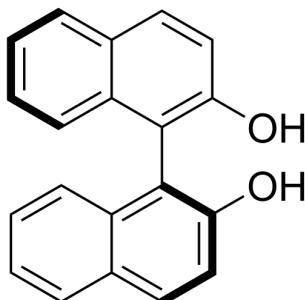


## Certificate of Analysis

### Compound Information

<b>Product Name:</b>	(S)-1,1'-Bi-2,2'-naphthol
<b>Cat. No.:</b>	1024345
<b>CAS No.:</b>	18531-99-2
<b>Molecular Formula:</b>	C <sub>20</sub> H <sub>14</sub> O <sub>2</sub>
<b>Molecular Weight:</b>	286.32
<b>Chemical Structure:</b>	



### Batch Information

<b>Batch No.:</b>	Lg1127340698
<b>Storage:</b>	Storage temp. 2-8°C
<b>Test Date:</b>	2023-11-27
<b>Retest Date:</b>	2026-11-26
<b>Origin:</b>	Shanghai, China

### QC Summary

<b>Appearance:</b>	White to off-white (Solid)
<b><sup>1</sup>H NMR Spectrum:</b>	Consistent with structure
<b>Enantiomeric Excess:</b>	99.93%
<b>Purity (HPLC):</b>	99.98%
<b>Optical Rotation[α]:</b>	-34.06° (C=0.01 g/ml THF)
<b>Water(KF):</b>	0.23%
<b>Conclusion:</b>	The product has been tested and complies with the given specifications.

**Caution: Research use only and are not intended for human use.**

Tel: 400-821-0725

E-mail: [product@leyan.com](mailto:product@leyan.com)

Address: No. 1999 Zhangheng Road, Building 3, Zhangjiang High-Tech Park, Shanghai