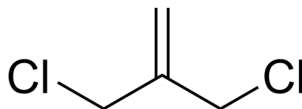


## Certificate of Analysis

### Compound Information

<b>Product Name:</b>	3-Chloro-2-(chloromethyl)prop-1-ene
<b>Cat. No.:</b>	1024433
<b>CAS No.:</b>	1871-57-4
<b>Molecular Formula:</b>	C <sub>4</sub> H <sub>6</sub> Cl <sub>2</sub>
<b>Molecular Weight:</b>	124.99
<b>Chemical Structure:</b>	



### Batch Information

<b>Batch No.:</b>	Le010427739
<b>Storage:</b>	2-8°C, stored under nitrogen
<b>Test Date:</b>	2021-01-04
<b>Retest Date:</b>	2024-01-03
<b>Origin:</b>	Shanghai, China

### QC Summary

<b>Appearance:</b>	Colorless to light yellow (Liquid)
<b><sup>1</sup>H NMR Spectrum:</b>	Consistent with structure
<b>Purity (NMR):</b>	≥97.0%
<b>Water:</b>	0.07%
<b>Conclusion:</b>	The product has been tested and complies with the given specifications.

Caution: Research use only and are not intended for human use.

Tel: 400-821-0725

E-mail: [product@leyan.com](mailto:product@leyan.com)

Address: No. 1999 Zhangheng Road, Building 3, Zhangjiang High-Tech Park, Shanghai