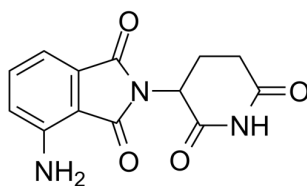


## Certificate of Analysis

### Compound Information

<b>Product Name:</b>	Pomalidomide
<b>Cat. No.:</b>	1024673
<b>CAS No.:</b>	19171-19-8
<b>Molecular Formula:</b>	C <sub>13</sub> H <sub>11</sub> N <sub>3</sub> O <sub>4</sub>
<b>Molecular Weight:</b>	273.24
<b>Chemical Structure:</b>	



### Batch Information

<b>Batch No.:</b>	Ld110922482
<b>Storage:</b>	Storage temp. 2-8°C
<b>Mfg. Date:</b>	2019-11-18
<b>Retest Date:</b>	2022-11-17
<b>Origin:</b>	Shanghai, China

### QC Summary

<b>Appearance:</b>	Light yellow to green yellow (Solid)
<b><sup>1</sup>H NMR Spectrum:</b>	Consistent with structure
<b>LCMS:</b>	Consistent with structure
<b>Purity (LCMS):</b>	99.85%
<b>Conclusion:</b>	The product has been tested and complies with the given specifications.

**Caution: Research use only and are not intended for human use.**

Tel: 400-821-0725

E-mail: [product@leyan.com](mailto:product@leyan.com)

Address: No. 1999 Zhangheng Road, Building 3, Zhangjiang High-Tech Park, Shanghai