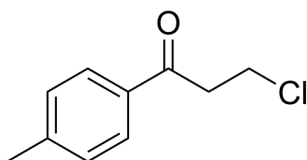


## Certificate of Analysis

### Compound Information

|                            |                                     |
|----------------------------|-------------------------------------|
| <b>Product Name:</b>       | 3-Chloro-1-(p-tolyl)propan-1-one    |
| <b>Cat. No.:</b>           | 1026344                             |
| <b>CAS No.:</b>            | 22422-21-5                          |
| <b>Molecular Formula:</b>  | C <sub>10</sub> H <sub>11</sub> ClO |
| <b>Molecular Weight:</b>   | 182.65                              |
| <b>Chemical Structure:</b> |                                     |



### Batch Information

|                     |                           |
|---------------------|---------------------------|
| <b>Batch No.:</b>   | Lg0522252746              |
| <b>Storage:</b>     | Store at room temperature |
| <b>Test Date:</b>   | 2023-05-22                |
| <b>Retest Date:</b> | 2028-05-21                |
| <b>Origin:</b>      | Shanghai, China           |

### QC Summary

|                                    |   |
|------------------------------------|---|
| <b>Appearance:</b>                 | White to off-white (Solid)  |
| <b><sup>1</sup>H NMR Spectrum:</b> | Consistent with structure   |
| <b>Purity (HPLC):</b>              | 99.86%  |
| <b>Conclusion:</b>                 | The product has been tested and complies with the given specifications. |

**Caution: Research use only and are not intended for human use.**

Tel: 400-821-0725

E-mail: [product@leyan.com](mailto:product@leyan.com)

Address: No. 1999 Zhangheng Road, Building 3, Zhangjiang High-Tech Park, Shanghai