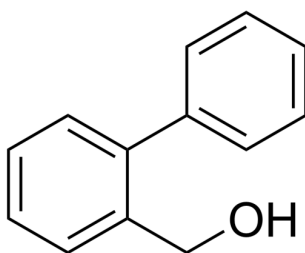


## Certificate of Analysis

### Compound Information

Product Name:	[1,1'-Biphenyl]-2-ylmethanol
Cat. No.:	1028557
CAS No.:	2928-43-0
Molecular Formula:	C <sub>13</sub> H <sub>12</sub> O
Molecular Weight:	184.24
Chemical Structure:	



### Batch Information

Batch No.:	Lg1011311312
Storage:	Store at room temperature
Test Date:	2023-07-25
Retest Date:	2028-07-24
Origin:	Shanghai, China

### QC Summary

Appearance:	White to off-white (Solid)
<sup>1</sup> H NMR Spectrum:	Consistent with structure
LCMS:	Consistent with structure
Purity (NMR):	≥98.0%
Conclusion:	The product has been tested and complies with the given specifications.

Caution: Research use only and are not intended for human use.

Tel: 400-821-0725

E-mail: [product@leyan.com](mailto:product@leyan.com)

Address: No. 1999 Zhangheng Road, Building 3, Zhangjiang High-Tech Park, Shanghai