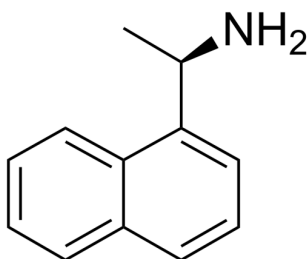


Certificate of Analysis

Compound Information

| | |
|----------------------------|-----------------------------------|
| Product Name: | (+)-1-(1-Naphthyl)ethylamine |
| Cat. No.: | 1031591 |
| CAS No.: | 3886-70-2 |
| Molecular Formula: | C ₁₂ H ₁₃ N |
| Molecular Weight: | 171.24 |
| Chemical Structure: | |



Batch Information

| | |
|---------------------|--|
| Batch No.: | Le1228115936 |
| Storage: | 2-8°C, protect from light, stored under nitrogen |
| Test Date: | 2019-07-20 |
| Retest Date: | 2022-07-19 |
| Origin: | Shanghai, China |

QC Summary

| | |
|-----------------------|---|
| Appearance: | Light yellow to yellow (Liquid) |
| Purity (HPLC): | 96.70% |
| Conclusion: | The product has been tested and complies with the given specifications. |

Caution: Research use only and are not intended for human use.

Tel: 400-821-0725

E-mail: product@leyan.com

Address: No. 1999 Zhangheng Road, Building 3, Zhangjiang High-Tech Park, Shanghai