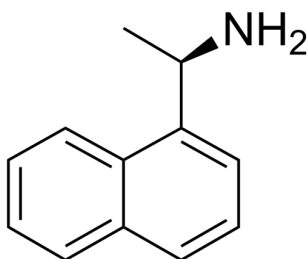


## Certificate of Analysis

### Compound Information

<b>Product Name:</b>	(+)-1-(1-Naphthyl)ethylamine
<b>Cat. No.:</b>	1031591
<b>CAS No.:</b>	3886-70-2
<b>Molecular Formula:</b>	C <sub>12</sub> H <sub>13</sub> N
<b>Molecular Weight:</b>	171.24
<b>Chemical Structure:</b>	



### Batch Information

<b>Batch No.:</b>	Lg0110195663
<b>Storage:</b>	2-8°C, protect from light, stored under nitrogen
<b>Test Date:</b>	2022-06-14
<b>Retest Date:</b>	2025-06-13
<b>Origin:</b>	Shanghai, China

### QC Summary

<b>Appearance:</b>	Light yellow to yellow (Liquid)
<b>Purity (HPLC):</b>	97.02%
<b>Conclusion:</b>	The product has been tested and complies with the given specifications.

**Caution: Research use only and are not intended for human use.**

Tel: 400-821-0725

E-mail: [product@leyan.com](mailto:product@leyan.com)

Address: No. 1999 Zhangheng Road, Building 3, Zhangjiang High-Tech Park, Shanghai