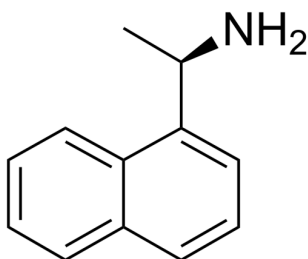


## Certificate of Analysis

### Compound Information

Product Name:	(+)-1-(1-Naphthyl)ethylamine
Cat. No.:	1031591
CAS No.:	3886-70-2
Molecular Formula:	C <sub>12</sub> H <sub>13</sub> N
Molecular Weight:	171.24
Chemical Structure:	



### Batch Information

Batch No.:	Lg0517250795
Storage:	2-8°C, protect from light, stored under nitrogen
Test Date:	2019-07-20
Retest Date:	2025-07-19
Origin:	Shanghai, China

### QC Summary

Appearance:	Light yellow to yellow (Liquid)
Purity (HPLC):	96.70%
Conclusion:	The product has been tested and complies with the given specifications.

Caution: Research use only and are not intended for human use.

Tel: 400-821-0725

E-mail: [product@leyan.com](mailto:product@leyan.com)

Address: No. 1999 Zhangheng Road, Building 3, Zhangjiang High-Tech Park, Shanghai