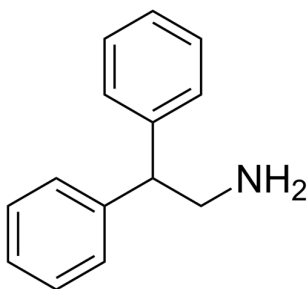


## Certificate of Analysis

### Compound Information

|                            |                                   |
|----------------------------|-----------------------------------|
| <b>Product Name:</b>       | 2,2-Diphenylethan-1-amine         |
| <b>Cat. No.:</b>           | 1031802                           |
| <b>CAS No.:</b>            | 3963-62-0                         |
| <b>Molecular Formula:</b>  | C <sub>14</sub> H <sub>15</sub> N |
| <b>Molecular Weight:</b>   | 197.28                            |
| <b>Chemical Structure:</b> |                                   |



### Batch Information

|                     |                        |
|---------------------|------------------------|
| <b>Batch No.:</b>   | Le061074054            |
| <b>Storage:</b>     | RT, protect from light |
| <b>Mfg. Date:</b>   | 2021-06-10             |
| <b>Retest Date:</b> | 2024-06-09             |
| <b>Origin:</b>      | Shanghai, China        |

### QC Summary

|                                    |   |
|------------------------------------|---|
| <b>Appearance:</b>                 | Off-white to light yellow (Solid)                                       |
| <b><sup>1</sup>H NMR Spectrum:</b> | Consistent with structure   |
| <b>Purity (GC):</b>                | 99.52%  |
| <b>Conclusion:</b>                 | The product has been tested and complies with the given specifications. |

Caution: Research use only and are not intended for human use.

Tel: 400-821-0725

E-mail: product@leyan.com

Address: No. 1999 Zhangheng Road, Building 3, Zhangjiang High-Tech Park, Shanghai