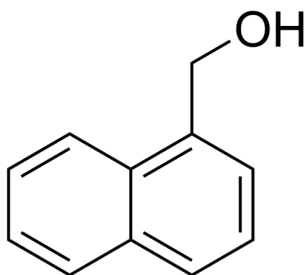


## Certificate of Analysis

### Compound Information

|                            |                                   |
|----------------------------|-----------------------------------|
| <b>Product Name:</b>       | 1-Naphthalenemethanol             |
| <b>Cat. No.:</b>           | 1033358                           |
| <b>CAS No.:</b>            | 4780-79-4                         |
| <b>Molecular Formula:</b>  | C <sub>11</sub> H <sub>10</sub> O |
| <b>Molecular Weight:</b>   | 158.20                            |
| <b>Chemical Structure:</b> |                                   |



### Batch Information

|                     |                     |
|---------------------|---------------------|
| <b>Batch No.:</b>   | Lg0225205219        |
| <b>Storage:</b>     | Storage temp. 2-8°C |
| <b>Mfg. Date:</b>   | 2023-02-27          |
| <b>Retest Date:</b> | 2026-02-26          |
| <b>Origin:</b>      | Shanghai, China     |

### QC Summary

|                                    |                                                                         |
|------------------------------------|-------------------------------------------------------------------------|
| <b>Appearance:</b>                 | Off-white to yellow (Solid)                                             |
| <b><sup>1</sup>H NMR Spectrum:</b> | Consistent with structure                                               |
| <b>Purity (HPLC):</b>              | 99.94%                                                                  |
| <b>Water(KF):</b>                  | 0.03%                                                                   |
| <b>Residue on Ignition:</b>        | 0.21%                                                                   |
| <b>Conclusion:</b>                 | The product has been tested and complies with the given specifications. |

**Caution: Research use only and are not intended for human use.**

Tel: 400-821-0725

E-mail: [product@leyan.com](mailto:product@leyan.com)

Address: No. 1999 Zhangheng Road, Building 3, Zhangjiang High-Tech Park, Shanghai