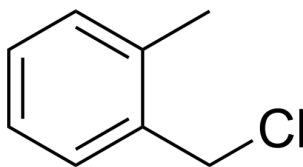


## Certificate of Analysis

### Compound Information

|                            |                                  |
|----------------------------|----------------------------------|
| <b>Product Name:</b>       | 1-(Chloromethyl)-2-methylbenzene |
| <b>Cat. No.:</b>           | 1035658                          |
| <b>CAS No.:</b>            | 552-45-4                         |
| <b>Molecular Formula:</b>  | C <sub>8</sub> H <sub>9</sub> Cl |
| <b>Molecular Weight:</b>   | 140.61                           |
| <b>Chemical Structure:</b> |                                  |



### Batch Information

|                     |                     |
|---------------------|---------------------|
| <b>Batch No.:</b>   | Le073092465         |
| <b>Storage:</b>     | Storage temp. 2-8°C |
| <b>Test Date:</b>   | 2021-07-30          |
| <b>Retest Date:</b> | 2024-07-29          |
| <b>Origin:</b>      | Shanghai, China     |

### QC Summary

|                    |   |
|--------------------|---|
| <b>Appearance:</b> | Colorless to light yellow (Liquid)                                      |
| <b>Purity:</b>     | ≥95.0%  |
| <b>Conclusion:</b> | The product has been tested and complies with the given specifications. |

**Caution: Research use only and are not intended for human use.**

Tel: 400-821-0725

E-mail: [product@leyan.com](mailto:product@leyan.com)

Address: No. 1999 Zhangheng Road, Building 3, Zhangjiang High-Tech Park, Shanghai