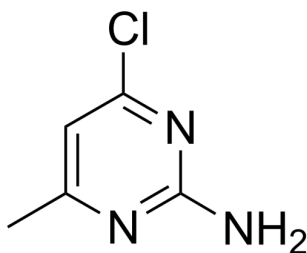


## Certificate of Analysis

### Compound Information

<b>Product Name:</b>	4-Chloro-6-methylpyrimidin-2-amine
<b>Cat. No.:</b>	1035930
<b>CAS No.:</b>	5600-21-5
<b>Molecular Formula:</b>	C <sub>5</sub> H <sub>6</sub> ClN <sub>3</sub>
<b>Molecular Weight:</b>	143.57
<b>Chemical Structure:</b>	



### Batch Information

<b>Batch No.:</b>	Le1227115641
<b>Storage:</b>	-20°C, sealed storage, away from moisture and light
<b>Test Date:</b>	2021-12-28
<b>Retest Date:</b>	2024-12-27
<b>Origin:</b>	Shanghai, China

### QC Summary

<b>Appearance:</b>	Off-white to yellow (Solid)
<b><sup>1</sup>H NMR Spectrum:</b>	Consistent with structure
<b>LCMS:</b>	Consistent with structure
<b>Purity (NMR):</b>	≥98.0%
<b>Conclusion:</b>	The product has been tested and complies with the given specifications.

Caution: Research use only and are not intended for human use.

Tel: 400-821-0725

E-mail: [product@leyan.com](mailto:product@leyan.com)

Address: No. 1999 Zhangheng Road, Building 3, Zhangjiang High-Tech Park, Shanghai