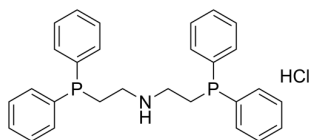


## Certificate of Analysis

### Compound Information

|                            |  |
|----------------------------|--|
| <b>Product Name:</b>       | Bis(2-(diphenylphosphino)ethyl)amine hydrochloride |
| <b>Cat. No.:</b>           | 1039417  |
| <b>CAS No.:</b>            | 66534-97-2   |
| <b>Molecular Formula:</b>  | C <sub>28</sub> H <sub>30</sub> ClNP <sub>2</sub>  |
| <b>Molecular Weight:</b>   | 477.95   |
| <b>Chemical Structure:</b> |  |



### Batch Information

|                     |  |
|---------------------|--|
| <b>Batch No.:</b>   | Lg0511248241                                     |
| <b>Storage:</b>     | 2-8°C, protect from light, stored under nitrogen |
| <b>Test Date:</b>   | 2023-05-11                                       |
| <b>Retest Date:</b> | 2026-05-10                                       |
| <b>Origin:</b>      | Shanghai, China                                  |

### QC Summary

|                                    |   |
|------------------------------------|---|
| <b>Appearance:</b>                 | White to off-white (Solid)  |
| <b><sup>1</sup>H NMR Spectrum:</b> | Consistent with structure   |
| <b>Purity (NMR):</b>               | ≥97.0%  |
| <b>Conclusion:</b>                 | The product has been tested and complies with the given specifications. |

**Caution: Research use only and are not intended for human use.**

Tel: 400-821-0725

E-mail: [product@leyan.com](mailto:product@leyan.com)

Address: No. 1999 Zhangheng Road, Building 3, Zhangjiang High-Tech Park, Shanghai