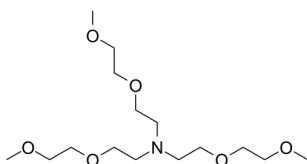


## Certificate of Analysis

### Compound Information

<b>Product Name:</b>	Tris(2-(2-methoxyethoxy)ethyl)amine
<b>Cat. No.:</b>	1040410
<b>CAS No.:</b>	70384-51-9
<b>Molecular Formula:</b>	C <sub>15</sub> H <sub>33</sub> NO <sub>6</sub>
<b>Molecular Weight:</b>	323.43
<b>Chemical Structure:</b>	



### Batch Information

<b>Batch No.:</b>	Lf0822162011
<b>Storage:</b>	2-8°C, protect from light
<b>Mfg. Date:</b>	2022-08-22
<b>Retest Date:</b>	2025-08-21
<b>Origin:</b>	Shanghai, China

### QC Summary

<b>Appearance:</b>	Yellow to brown (Liquid)
<b><sup>1</sup>H NMR Spectrum:</b>	Consistent with structure
<b>Purity (NMR):</b>	≥95.0%
<b>Water(KF):</b>	0.76%
<b>Conclusion:</b>	The product has been tested and complies with the given specifications.

Caution: Research use only and are not intended for human use.

Tel: 400-821-0725

E-mail: [product@leyan.com](mailto:product@leyan.com)

Address: No. 1999 Zhangheng Road, Building 3, Zhangjiang High-Tech Park, Shanghai