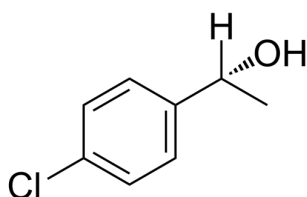


## Certificate of Analysis

### Compound Information

Product Name:	(R)-1-(4-Chlorophenyl)ethanol
Cat. No.:	1042213
CAS No.:	75968-40-0
Molecular Formula:	C <sub>8</sub> H <sub>9</sub> ClO
Molecular Weight:	156.61
Chemical Structure:	



### Batch Information

Batch No.:	Le070178041
Storage:	Storage temp. 2-8°C
Mfg. Date:	2021-07-02
Retest Date:	2024-07-01
Origin:	Shanghai, China

### QC Summary

Appearance:	Colorless to light yellow (Liquid)
<sup>1</sup> H NMR Spectrum:	Consistent with structure
Purity (HPLC):	98.29%
Conclusion:	The product has been tested and complies with the given specifications.

Caution: Research use only and are not intended for human use.

Tel: 400-821-0725

E-mail: product@leyan.com

Address: No. 1999 Zhangheng Road, Building 3, Zhangjiang High-Tech Park, Shanghai