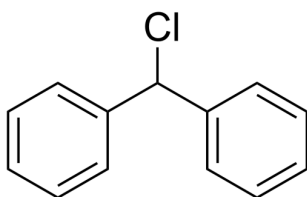


## Certificate of Analysis

### Compound Information

|                            |                                    |
|----------------------------|------------------------------------|
| <b>Product Name:</b>       | (Chloromethylene)dibenzene         |
| <b>Cat. No.:</b>           | 1046571                            |
| <b>CAS No.:</b>            | 90-99-3                            |
| <b>Molecular Formula:</b>  | C <sub>13</sub> H <sub>11</sub> Cl |
| <b>Molecular Weight:</b>   | 202.68                             |
| <b>Chemical Structure:</b> |                                    |



### Batch Information

|                     |                     |
|---------------------|---------------------|
| <b>Batch No.:</b>   | Lf0429131190        |
| <b>Storage:</b>     | Storage temp. 2-8°C |
| <b>Mfg. Date:</b>   | 2022-04-29          |
| <b>Retest Date:</b> | 2025-04-28          |
| <b>Origin:</b>      | Shanghai, China     |

### QC Summary

|                                    |   |
|------------------------------------|---|
| <b>Appearance:</b>                 | Colorless to yellow (Liquid)  |
| <b><sup>1</sup>H NMR Spectrum:</b> | Consistent with structure   |
| <b>Purity (NMR):</b>               | ≥98.0%  |
| <b>Water(KF):</b>                  | 0.03%   |
| <b>Conclusion:</b>                 | The product has been tested and complies with the given specifications. |

**Caution: Research use only and are not intended for human use.**

Tel: 400-821-0725

E-mail: [product@leyan.com](mailto:product@leyan.com)

Address: No. 1999 Zhangheng Road, Building 3, Zhangjiang High-Tech Park, Shanghai