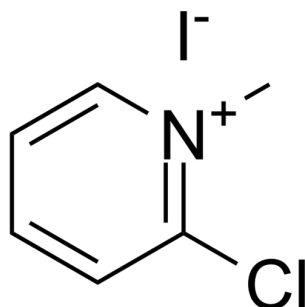


Certificate of Analysis

Compound Information

| | |
|----------------------------|------------------------------------|
| Product Name: | 2-Chloro-1-methylpyridinium iodide |
| Cat. No.: | 1050982 |
| CAS No.: | 14338-32-0 |
| Molecular Formula: | C ₆ H ₇ ClIN |
| Molecular Weight: | 255.48 |
| Chemical Structure: | |



Batch Information

| | |
|---------------------|---------------------------|
| Batch No.: | Le012239487 |
| Storage: | 2-8°C, protect from light |
| Mfg. Date: | 2021-01-26 |
| Retest Date: | 2024-01-25 |
| Origin: | Shanghai, China |

QC Summary

| | |
|------------------------------------|---|
| Appearance: | Light yellow to yellow (Solid) |
| ¹H NMR Spectrum: | Consistent with structure |
| Purity (NMR): | ≥95.0% |
| Water: | 0.15% |
| Conclusion: | The product has been tested and complies with the given specifications. |

Caution: Research use only and are not intended for human use.

Tel: 400-821-0725

E-mail: product@leyan.com

Address: No. 1999 Zhangheng Road, Building 3, Zhangjiang High-Tech Park, Shanghai