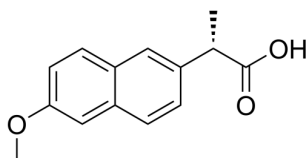


Certificate of Analysis

Compound Information

| | |
|----------------------------|--|
| Product Name: | Naproxen |
| Cat. No.: | 1053948 |
| CAS No.: | 22204-53-1 |
| Molecular Formula: | C ₁₄ H ₁₄ O ₃ |
| Molecular Weight: | 230.26 |
| Chemical Structure: | |



Batch Information

| | |
|---------------------|---------------------|
| Batch No.: | Ld101620387 |
| Storage: | Storage temp. 2-8°C |
| Test Date: | 2019-12-15 |
| Retest Date: | 2022-12-14 |
| Origin: | Shanghai, China |

QC Summary

| | |
|-----------------------|---|
| Appearance: | White to off-white (Solid) |
| LCMS: | Consistent with structure |
| Purity (LCMS): | 99.96% |
| Conclusion: | The product has been tested and complies with the given specifications. |

Caution: Research use only and are not intended for human use.

Tel: 400-821-0725

E-mail: product@leyan.com

Address: No. 1999 Zhangheng Road, Building 3, Zhangjiang High-Tech Park, Shanghai