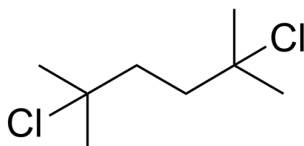


Certificate of Analysis

Compound Information

| | |
|----------------------------|------------------------------------------------|
| Product Name: | 2,5-Dichloro-2,5-dimethylhexane |
| Cat. No.: | 1058062 |
| CAS No.: | 6223-78-5 |
| Molecular Formula: | C ₈ H ₁₆ Cl ₂ |
| Molecular Weight: | 183.12 |
| Chemical Structure: | |



Batch Information

| | |
|---------------------|---------------------------|
| Batch No.: | Ld060404421 |
| Storage: | Store at room temperature |
| Test Date: | 2020-06-04 |
| Retest Date: | 2025-06-03 |
| Origin: | Shanghai, China |

QC Summary

| | |
|------------------------------------|-------------------------------------------------------------------------|
| Appearance: | White to off-white (Solid) |
| ¹H NMR Spectrum: | Consistent with structure |
| Purity (GC): | 97.88% |
| Water(KF): | 0.11% |
| Conclusion: | The product has been tested and complies with the given specifications. |

Caution: Research use only and are not intended for human use.

Tel: 400-821-0725

E-mail: product@leyan.com

Address: No. 1999 Zhangheng Road, Building 3, Zhangjiang High-Tech Park, Shanghai