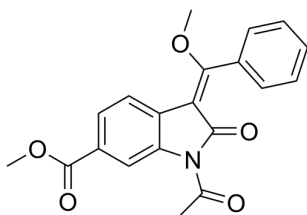


## Certificate of Analysis

### Compound Information

|                            |   |
|----------------------------|---|
| <b>Product Name:</b>       | Methyl (3E)-1-acetyl-3-[methoxy(phenyl)methylidene]-2-oxo-2,3-dihydro-1H-indole-6-carboxylate |
| <b>Cat. No.:</b>           | 1058766   |
| <b>CAS No.:</b>            | 1168152-07-5  |
| <b>Molecular Formula:</b>  | C <sub>20</sub> H <sub>17</sub> NO <sub>5</sub>   |
| <b>Molecular Weight:</b>   | 351.35  |
| <b>Chemical Structure:</b> |   |



### Batch Information

|                     |                     |
|---------------------|---------------------|
| <b>Batch No.:</b>   | Lg0608257684        |
| <b>Storage:</b>     | Storage temp. 2-8°C |
| <b>Test Date:</b>   | 2020-11-24          |
| <b>Retest Date:</b> | 2023-11-23          |
| <b>Origin:</b>      | Shanghai, China     |

### QC Summary

|                       |   |
|-----------------------|---|
| <b>Appearance:</b>    | White to yellow (Solid)   |
| <b>Purity (HPLC):</b> | 98.04%  |
| <b>Conclusion:</b>    | The product has been tested and complies with the given specifications. |

**Caution: Research use only and are not intended for human use.**

Tel: 400-821-0725

E-mail: [product@leyan.com](mailto:product@leyan.com)

Address: No. 1999 Zhangheng Road, Building 3, Zhangjiang High-Tech Park, Shanghai