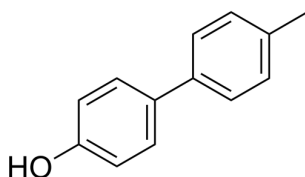


## Certificate of Analysis

### Compound Information

|                            |                                   |
|----------------------------|-----------------------------------|
| <b>Product Name:</b>       | 4'-Methyl-[1,1'-biphenyl]-4-ol    |
| <b>Cat. No.:</b>           | 1064863                           |
| <b>CAS No.:</b>            | 26191-64-0                        |
| <b>Molecular Formula:</b>  | C <sub>13</sub> H <sub>12</sub> O |
| <b>Molecular Weight:</b>   | 184.23                            |
| <b>Chemical Structure:</b> |                                   |



### Batch Information

|                     |                           |
|---------------------|---------------------------|
| <b>Batch No.:</b>   | Lg1229364343              |
| <b>Storage:</b>     | Store at room temperature |
| <b>Test Date:</b>   | 2023-12-12                |
| <b>Retest Date:</b> | 2028-12-11                |
| <b>Origin:</b>      | Shanghai, China           |

### QC Summary

|                                    |   |
|------------------------------------|---|
| <b>Appearance:</b>                 | White to off-white (Solid)  |
| <b><sup>1</sup>H NMR Spectrum:</b> | Consistent with structure   |
| <b>Purity (HPLC):</b>              | 97.35%  |
| <b>Conclusion:</b>                 | The product has been tested and complies with the given specifications. |

**Caution: Research use only and are not intended for human use.**

Tel: 400-821-0725

E-mail: [product@leyan.com](mailto:product@leyan.com)

Address: No. 1999 Zhangheng Road, Building 3, Zhangjiang High-Tech Park, Shanghai