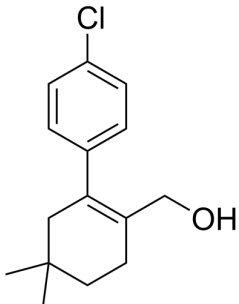
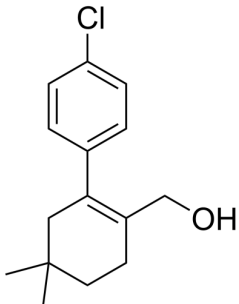


## Certificate of Analysis

### Compound Information

<b>Product Name:</b>	(2-(4-chlorophenyl)-4,4-dimethylcyclohex-1-enyl)methanol
<b>Cat. No.:</b>	1066779
<b>CAS No.:</b>	1228780-51-5
<b>Molecular Formula:</b>	C <sub>15</sub> H <sub>19</sub> ClO
<b>Molecular Weight:</b>	250.76
<b>Chemical Structure:</b>	



### Batch Information

<b>Batch No.:</b>	Lf1122184371
<b>Storage:</b>	Storage temp. 2-8°C
<b>Test Date:</b>	2017-03-27
<b>Retest Date:</b>	2024-03-26
<b>Origin:</b>	Shanghai, China

### QC Summary

<b>Appearance:</b>	Off-white to light yellow (Solid)
<b><sup>1</sup>H NMR Spectrum:</b>	Consistent with structure
<b>Purity (HPLC):</b>	98.55%
<b>Conclusion:</b>	The product has been tested and complies with the given specifications.

Caution: Research use only and are not intended for human use.

Tel: 400-821-0725

E-mail: [product@leyan.com](mailto:product@leyan.com)

Address: No. 1999 Zhangheng Road, Building 3, Zhangjiang High-Tech Park, Shanghai