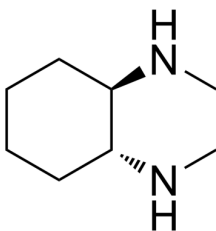


## Certificate of Analysis

### Compound Information

Product Name:	(1R,2R)-N1,N2-Dimethylcyclohexane-1,2-diamine dihydrochloride
Cat. No.:	1067012
CAS No.:	70708-33-7
Molecular Formula:	C <sub>8</sub> H <sub>20</sub> Cl <sub>2</sub> N <sub>2</sub>
Molecular Weight:	215.16
Chemical Structure:	



H-Cl   H-Cl

### Batch Information

Batch No.:	Lg0217k07
Storage:	Store at room temperature
Test Date:	2023-02-17
Retest Date:	2028-02-16
Origin:	Shanghai, China

### QC Summary

Appearance:	White to off-white (Solid)
<sup>1</sup> H NMR Spectrum:	Consistent with structure
Purity (NMR):	≥97.0%
OR[α](C=0.50 g/100ml 1N NaOH):	-70.2°
Conclusion:	The product has been tested and complies with the given specifications.

Caution: Research use only and are not intended for human use.

Tel: 400-821-0725

E-mail: [product@leyan.com](mailto:product@leyan.com)

Address: No. 1999 Zhangheng Road, Building 3, Zhangjiang High-Tech Park, Shanghai