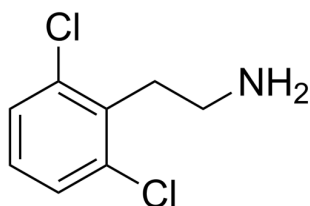


## Certificate of Analysis

### Compound Information

<b>Product Name:</b>	2,6-Dichlorophenethylamine
<b>Cat. No.:</b>	1067320
<b>CAS No.:</b>	14573-23-0
<b>Molecular Formula:</b>	C <sub>8</sub> H <sub>9</sub> Cl <sub>2</sub> N
<b>Molecular Weight:</b>	190.07
<b>Chemical Structure:</b>	



### Batch Information

<b>Batch No.:</b>	L369173
<b>Storage:</b>	Storage temp. 2-8°C
<b>Test Date:</b>	2017-09-25
<b>Retest Date:</b>	2020-09-24
<b>Origin:</b>	Shanghai, China

### QC Summary

<b>Appearance:</b>	Colorless to light yellow (Liquid)
<b><sup>1</sup>H NMR Spectrum:</b>	Consistent with structure
<b>LCMS:</b>	Consistent with structure
<b>Purity (LCMS):</b>	98.99%
<b>Conclusion:</b>	The product has been tested and complies with the given specifications.

**Caution: Research use only and are not intended for human use.**

Tel: 400-821-0725

E-mail: [product@leyan.com](mailto:product@leyan.com)

Address: No. 1999 Zhangheng Road, Building 3, Zhangjiang High-Tech Park, Shanghai