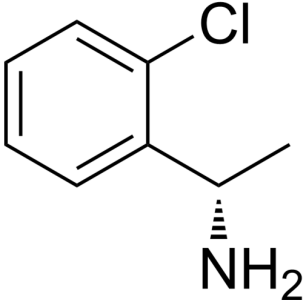
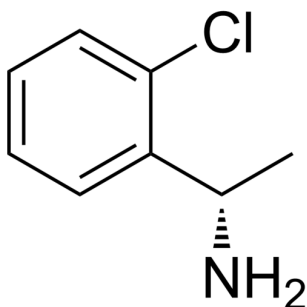


## Certificate of Analysis

### Compound Information

<b>Product Name:</b>	(S)-1-(2-Chlorophenyl)ethan-1-amine
<b>Cat. No.:</b>	1070373
<b>CAS No.:</b>	68285-26-7
<b>Molecular Formula:</b>	C <sub>8</sub> H <sub>10</sub> ClN
<b>Molecular Weight:</b>	155.62
<b>Chemical Structure:</b>	



### Batch Information

<b>Batch No.:</b>	Ld071611933
<b>Storage:</b>	2-8°C, protect from light
<b>Test Date:</b>	2020-07-17
<b>Retest Date:</b>	2026-07-16
<b>Origin:</b>	Shanghai, China

### QC Summary

<b>Appearance:</b>	Colorless to light yellow (Liquid)
<b><sup>1</sup>H NMR Spectrum:</b>	Consistent with structure
<b>LCMS:</b>	Consistent with structure
<b>Purity (LCMS):</b>	99.13%
<b>Optical Rotation:</b>	-50° (C=0.0058 g/ml, DCM)
<b>Conclusion:</b>	The product has been tested and complies with the given specifications.

Caution: Research use only and are not intended for human use.

Tel: 400-821-0725

E-mail: [product@leyan.com](mailto:product@leyan.com)

Address: No. 1999 Zhangheng Road, Building 3, Zhangjiang High-Tech Park, Shanghai