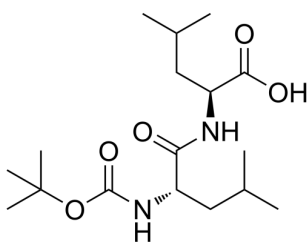


## Certificate of Analysis

### Compound Information

|                            |   |
|----------------------------|---|
| <b>Product Name:</b>       | N-[(1,1-Dimethylethoxy)carbonyl]-L-leucyl-L-leucine           |
| <b>Cat. No.:</b>           | 1077603   |
| <b>CAS No.:</b>            | 73401-65-7  |
| <b>Molecular Formula:</b>  | C <sub>17</sub> H <sub>32</sub> N <sub>2</sub> O <sub>5</sub> |
| <b>Molecular Weight:</b>   | 344.45  |
| <b>Chemical Structure:</b> |   |



### Batch Information

|                     |                     |
|---------------------|---------------------|
| <b>Batch No.:</b>   | Lf0730157442        |
| <b>Storage:</b>     | Storage temp. 2-8°C |
| <b>Test Date:</b>   | 2022-08-01          |
| <b>Retest Date:</b> | 2025-07-31          |
| <b>Origin:</b>      | Shanghai, China     |

### QC Summary

|                                    |   |
|------------------------------------|---|
| <b>Appearance:</b>                 | White to off-white (Solid)  |
| <b><sup>1</sup>H NMR Spectrum:</b> | Consistent with structure   |
| <b>Purity (NMR):</b>               | ≥97.0%  |
| <b>OR[α](C=1.00 g/100ml ETOH):</b> | -38.7°  |
| <b>Conclusion:</b>                 | The product has been tested and complies with the given specifications. |

**Caution: Research use only and are not intended for human use.**

Tel: 400-821-0725

E-mail: [product@leyan.com](mailto:product@leyan.com)

Address: No. 1999 Zhangheng Road, Building 3, Zhangjiang High-Tech Park, Shanghai