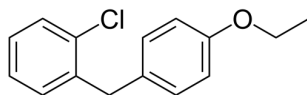


## Certificate of Analysis

### Compound Information

<b>Product Name:</b>	1-Chloro-2-[(4-ethoxyphenyl)methyl]benzene
<b>Cat. No.:</b>	1081362
<b>CAS No.:</b>	1662702-90-0
<b>Molecular Formula:</b>	C <sub>15</sub> H <sub>15</sub> ClO
<b>Molecular Weight:</b>	246.73
<b>Chemical Structure:</b>	



### Batch Information

<b>Batch No.:</b>	Ld062408756
<b>Storage:</b>	Storage temp. 2-8°C
<b>Mfg. Date:</b>	2019-08-05
<b>Retest Date:</b>	2022-08-04
<b>Origin:</b>	Shanghai, China

### QC Summary

<b>Appearance:</b>	White to off-white (Solid)
<b>Purity (HPLC):</b>	98.02%
<b>Conclusion:</b>	The product has been tested and complies with the given specifications.

**Caution: Research use only and are not intended for human use.**

Tel: 400-821-0725

E-mail: [product@leyan.com](mailto:product@leyan.com)

Address: No. 1999 Zhangheng Road, Building 3, Zhangjiang High-Tech Park, Shanghai