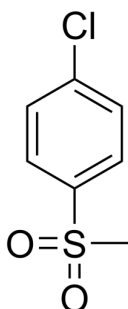


## Certificate of Analysis

### Compound Information

<b>Product Name:</b>	4-Chlorophenyl methyl sulfone
<b>Cat. No.:</b>	1088806
<b>CAS No.:</b>	98-57-7
<b>Molecular Formula:</b>	C <sub>7</sub> H <sub>7</sub> ClO <sub>2</sub> S
<b>Molecular Weight:</b>	190.65
<b>Chemical Structure:</b>	



### Batch Information

<b>Batch No.:</b>	Lg0803290500
<b>Storage:</b>	Store at room temperature
<b>Test Date:</b>	2023-08-04
<b>Retest Date:</b>	2028-08-03
<b>Origin:</b>	Shanghai, China

### QC Summary

<b>Appearance:</b>	White to light yellow (Solid)
<b>Purity:</b>	≥95.0%
<b>Conclusion:</b>	The product has been tested and complies with the given specifications.

**Caution: Research use only and are not intended for human use.**

Tel: 400-821-0725

E-mail: [product@leyan.com](mailto:product@leyan.com)

Address: No. 1999 Zhangheng Road, Building 3, Zhangjiang High-Tech Park, Shanghai