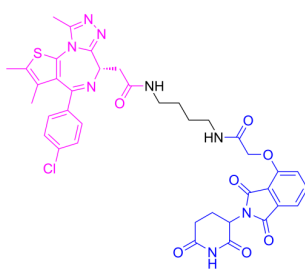


## Certificate of Analysis

### Compound Information

<b>Product Name:</b>	dBET1
<b>Cat. No.:</b>	1092199
<b>CAS No.:</b>	1799711-21-9
<b>Molecular Formula:</b>	C <sub>38</sub> H <sub>37</sub> ClN <sub>8</sub> O <sub>7</sub> S
<b>Molecular Weight:</b>	785.27
<b>Chemical Structure:</b>	



### Batch Information

<b>Batch No.:</b>	L416819
<b>Storage:</b>	Storage temp. 2-8°C
<b>Test Date:</b>	2022-12-07
<b>Retest Date:</b>	2025-12-06
<b>Origin:</b>	Shanghai, China

### QC Summary

<b>Appearance:</b>	White to light yellow (Solid)
<b>LCMS:</b>	Consistent with structure
<b>Purity (LCMS):</b>	98.86%
<b>Conclusion:</b>	The product has been tested and complies with the given specifications.

**Caution: Research use only and are not intended for human use.**

Tel: 400-821-0725

E-mail: [product@leyan.com](mailto:product@leyan.com)

Address: No. 1999 Zhangheng Road, Building 3, Zhangjiang High-Tech Park, Shanghai