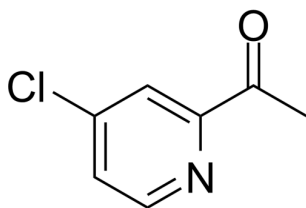


## Certificate of Analysis

### Compound Information

<b>Product Name:</b>	1-(4-Chloropyridin-2-yl)ethan-1-one
<b>Cat. No.:</b>	1108029
<b>CAS No.:</b>	60159-37-7
<b>Molecular Formula:</b>	C <sub>7</sub> H <sub>6</sub> ClNO
<b>Molecular Weight:</b>	155.58
<b>Chemical Structure:</b>	



### Batch Information

<b>Batch No.:</b>	Lc1010041
<b>Storage:</b>	Storage temp. 2-8°C
<b>Mfg. Date:</b>	2019-10-10
<b>Retest Date:</b>	2022-10-09
<b>Origin:</b>	Shanghai, China

### QC Summary

<b>Appearance:</b>	Light yellow to yellow (Solid-liquid mixture)
<b><sup>1</sup>H NMR Spectrum:</b>	Consistent with structure
<b>Purity (NMR):</b>	≥97.0%
<b>Conclusion:</b>	The product has been tested and complies with the given specifications.

**Caution: Research use only and are not intended for human use.**

Tel: 400-821-0725

E-mail: [product@leyan.com](mailto:product@leyan.com)

Address: No. 1999 Zhangheng Road, Building 3, Zhangjiang High-Tech Park, Shanghai