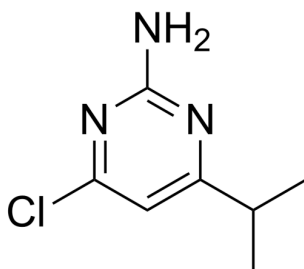


## Certificate of Analysis

### Compound Information

|                            |   |
|----------------------------|---|
| <b>Product Name:</b>       | 4-Chloro-6-(propan-2-yl)pyrimidin-2-amine       |
| <b>Cat. No.:</b>           | 1108113   |
| <b>CAS No.:</b>            | 73576-33-7                                      |
| <b>Molecular Formula:</b>  | C <sub>7</sub> H <sub>10</sub> ClN <sub>3</sub> |
| <b>Molecular Weight:</b>   | 171.63  |
| <b>Chemical Structure:</b> |   |



### Batch Information

|                     |   |
|---------------------|---|
| <b>Batch No.:</b>   | Lc0930004   |
| <b>Storage:</b>     | -20°C, sealed storage, away from moisture and light |
| <b>Test Date:</b>   | 2019-09-30  |
| <b>Retest Date:</b> | 2022-09-29  |
| <b>Origin:</b>      | Shanghai, China                                     |

### QC Summary

|                                    |   |
|------------------------------------|---|
| <b>Appearance:</b>                 | White to off-white (Solid)  |
| <b><sup>1</sup>H NMR Spectrum:</b> | Consistent with structure   |
| <b>Purity (NMR):</b>               | ≥97.0%  |
| <b>Conclusion:</b>                 | The product has been tested and complies with the given specifications. |

**Caution: Research use only and are not intended for human use.**

Tel: 400-821-0725

E-mail: [product@leyan.com](mailto:product@leyan.com)

Address: No. 1999 Zhangheng Road, Building 3, Zhangjiang High-Tech Park, Shanghai