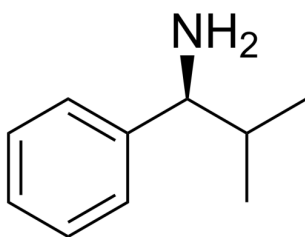


## Certificate of Analysis

### Compound Information

Product Name:	(S)-2-Methyl-1-phenylpropan-1-amine
Cat. No.:	1110940
CAS No.:	68906-26-3
Molecular Formula:	C <sub>10</sub> H <sub>15</sub> N
Molecular Weight:	149.23
Chemical Structure:	



### Batch Information

Batch No.:	Le1016103522
Storage:	2-8°C, protect from light
Mfg. Date:	2021-10-22
Retest Date:	2024-10-21
Origin:	Shanghai, China

### QC Summary

Appearance:	Colorless to light yellow (Liquid)
<sup>1</sup> H NMR Spectrum:	Consistent with structure
Purity (HPLC):	98.95%
Conclusion:	The product has been tested and complies with the given specifications.

Caution: Research use only and are not intended for human use.

Tel: 400-821-0725

E-mail: [product@leyan.com](mailto:product@leyan.com)

Address: No. 1999 Zhangheng Road, Building 3, Zhangjiang High-Tech Park, Shanghai