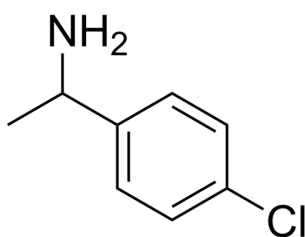


## Certificate of Analysis

### Compound Information

<b>Product Name:</b>	1-(4-Chlorophenyl)ethylamine
<b>Cat. No.:</b>	1112974
<b>CAS No.:</b>	6299-02-1
<b>Molecular Formula:</b>	C <sub>8</sub> H <sub>10</sub> ClN
<b>Molecular Weight:</b>	155.62
<b>Chemical Structure:</b>	



### Batch Information

<b>Batch No.:</b>	Lf0111117826
<b>Storage:</b>	2-8°C, protect from light
<b>Test Date:</b>	2022-01-11
<b>Retest Date:</b>	2025-01-10
<b>Origin:</b>	Shanghai, China

### QC Summary

<b>Appearance:</b>	Colorless to light yellow (Liquid)
<b>Purity:</b>	≥97.0%
<b>Conclusion:</b>	The product has been tested and complies with the given specifications.

**Caution: Research use only and are not intended for human use.**

Tel: 400-821-0725

E-mail: [product@leyan.com](mailto:product@leyan.com)

Address: No. 1999 Zhangheng Road, Building 3, Zhangjiang High-Tech Park, Shanghai