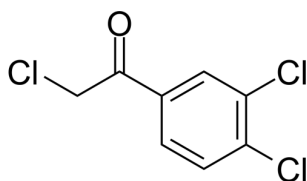


## Certificate of Analysis

### Compound Information

<b>Product Name:</b>	2-Chloro-1-(3,4-dichlorophenyl)ethan-1-one
<b>Cat. No.:</b>	1142912
<b>CAS No.:</b>	42981-08-8
<b>Molecular Formula:</b>	C <sub>8</sub> H <sub>5</sub> Cl <sub>3</sub> O
<b>Molecular Weight:</b>	223.4837
<b>Chemical Structure:</b>	



### Batch Information

<b>Batch No.:</b>	Le040666151
<b>Storage:</b>	Storage temp. 2-8°C
<b>Mfg. Date:</b>	2021-04-06
<b>Retest Date:</b>	2024-04-05
<b>Origin:</b>	Shanghai, China

### QC Summary

<b>Appearance:</b>	Off-white to light yellow (Solid)
<b>Purity:</b>	≥95.0%
<b>Conclusion:</b>	The product has been tested and complies with the given specifications.

**Caution: Research use only and are not intended for human use.**

Tel: 400-821-0725

E-mail: [product@leyan.com](mailto:product@leyan.com)

Address: No. 1999 Zhangheng Road, Building 3, Zhangjiang High-Tech Park, Shanghai