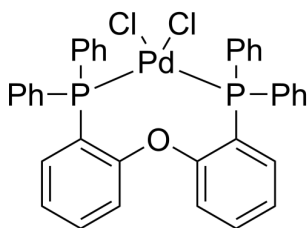


## Certificate of Analysis

### Compound Information

<b>Product Name:</b>	Dichloro[bis(diphenylphosphinophenyl)ether]palladium(II)
<b>Cat. No.:</b>	1151237
<b>CAS No.:</b>	205319-06-8
<b>Molecular Formula:</b>	C <sub>36</sub> H <sub>28</sub> Cl <sub>2</sub> OP <sub>2</sub> Pd
<b>Molecular Weight:</b>	715.88
<b>Chemical Structure:</b>	



### Batch Information

<b>Batch No.:</b>	Lg0227205817
<b>Storage:</b>	2-8°C, protect from light, stored under nitrogen
<b>Test Date:</b>	2023-02-27
<b>Retest Date:</b>	2026-02-26
<b>Origin:</b>	Shanghai, China

### QC Summary

<b>Appearance:</b>	Light yellow to yellow (Solid)
<b>Purity:</b>	≥98.0%
<b>Pd:</b>	≥14.55%
<b>Conclusion:</b>	The product has been tested and complies with the given specifications.

**Caution: Research use only and are not intended for human use.**

Tel: 400-821-0725

E-mail: [product@leyan.com](mailto:product@leyan.com)

Address: No. 1999 Zhangheng Road, Building 3, Zhangjiang High-Tech Park, Shanghai