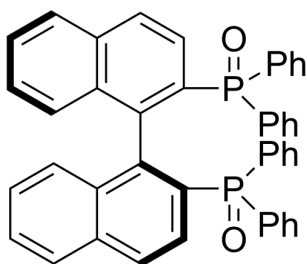


## Certificate of Analysis

### Compound Information

<b>Product Name:</b>	(S)-[1,1'-Binaphthalene]-2,2'-diylbis[1,1-diphenyl-1,1'-phosphine oxide]
<b>Cat. No.:</b>	1158013
<b>CAS No.:</b>	94041-18-6
<b>Molecular Formula:</b>	C <sub>44</sub> H <sub>32</sub> O <sub>2</sub> P <sub>2</sub>
<b>Molecular Weight:</b>	654.67
<b>Chemical Structure:</b>	



### Batch Information

<b>Batch No.:</b>	Lf0608138339
<b>Storage:</b>	2-8°C, protect from light, stored under nitrogen
<b>Mfg. Date:</b>	2022-06-09
<b>Retest Date:</b>	2025-06-08
<b>Origin:</b>	Shanghai, China

### QC Summary

<b>Appearance:</b>	White to off-white (Solid)
<b><sup>1</sup>H NMR Spectrum:</b>	Consistent with structure
<b>Optical Rotation:</b>	Consistent with structure
<b>Purity (NMR):</b>	≥97.0%
<b>Conclusion:</b>	The product has been tested and complies with the given specifications.

Caution: Research use only and are not intended for human use.

Tel: 400-821-0725

E-mail: [product@leyan.com](mailto:product@leyan.com)

Address: No. 1999 Zhangheng Road, Building 3, Zhangjiang High-Tech Park, Shanghai