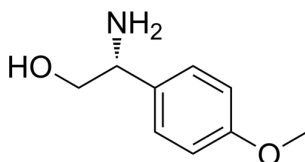


## Certificate of Analysis

### Compound Information

|                            |  |
|----------------------------|--|
| <b>Product Name:</b>       | (R)-2-Amino-2-(4-methoxyphenyl)ethanol         |
| <b>Cat. No.:</b>           | 1160575  |
| <b>CAS No.:</b>            | 100929-33-7                                    |
| <b>Molecular Formula:</b>  | C <sub>9</sub> H <sub>13</sub> NO <sub>2</sub> |
| <b>Molecular Weight:</b>   | 167.21   |
| <b>Chemical Structure:</b> |  |



### Batch Information

|                     |   |
|---------------------|---|
| <b>Batch No.:</b>   | Lg1008310450                              |
| <b>Storage:</b>     | -20°C, sealed storage, away from moisture |
| <b>Test Date:</b>   | 2023-10-08                                |
| <b>Retest Date:</b> | 2026-10-07                                |
| <b>Origin:</b>      | Shanghai, China                           |

### QC Summary

|                                    |   |
|------------------------------------|---|
| <b>Appearance:</b>                 | Off-white to light yellow (Solid)                                       |
| <b><sup>1</sup>H NMR Spectrum:</b> | Consistent with structure   |
| <b>Purity (NMR):</b>               | ≥97.0%  |
| <b>Conclusion:</b>                 | The product has been tested and complies with the given specifications. |

Caution: Research use only and are not intended for human use.

Tel: 400-821-0725

E-mail: [product@leyan.com](mailto:product@leyan.com)

Address: No. 1999 Zhangheng Road, Building 3, Zhangjiang High-Tech Park, Shanghai