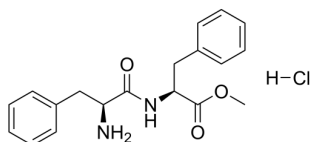


## Certificate of Analysis

### Compound Information

|                            |   |
|----------------------------|---|
| <b>Product Name:</b>       | Methyl L-phenylalanyl-L-phenylalaninate hydrochloride           |
| <b>Cat. No.:</b>           | 1182975   |
| <b>CAS No.:</b>            | 38017-65-1  |
| <b>Molecular Formula:</b>  | C <sub>19</sub> H <sub>23</sub> ClN <sub>2</sub> O <sub>3</sub> |
| <b>Molecular Weight:</b>   | 362.85  |
| <b>Chemical Structure:</b> |   |



### Batch Information

|                     |                           |
|---------------------|---------------------------|
| <b>Batch No.:</b>   | Ld0109007                 |
| <b>Storage:</b>     | Store at room temperature |
| <b>Test Date:</b>   | 2020-01-08                |
| <b>Retest Date:</b> | 2025-01-07                |
| <b>Origin:</b>      | Shanghai, China           |

### QC Summary

|                       |   |
|-----------------------|---|
| <b>Appearance:</b>    | White to off-white (Solid)  |
| <b>MS:</b>            | Consistent with structure   |
| <b>Purity (HPLC):</b> | 96.59%  |
| <b>Conclusion:</b>    | The product has been tested and complies with the given specifications. |

**Caution: Research use only and are not intended for human use.**

Tel: 400-821-0725

E-mail: [product@leyan.com](mailto:product@leyan.com)

Address: No. 1999 Zhangheng Road, Building 3, Zhangjiang High-Tech Park, Shanghai