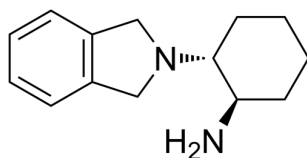


## Certificate of Analysis

### Compound Information

<b>Product Name:</b>	(1R,2R)-2-(Isoindolin-2-yl)cyclohexan-1-amine
<b>Cat. No.:</b>	1212168
<b>CAS No.:</b>	620960-38-5
<b>Molecular Formula:</b>	C <sub>14</sub> H <sub>20</sub> N <sub>2</sub>
<b>Molecular Weight:</b>	216.32
<b>Chemical Structure:</b>	



### Batch Information

<b>Batch No.:</b>	Lg0717280849
<b>Storage:</b>	2-8°C, protect from light
<b>Test Date:</b>	2023-07-17
<b>Retest Date:</b>	2026-07-16
<b>Origin:</b>	Shanghai, China

### QC Summary

<b>Appearance:</b>	Yellow to brown (Solid)
<b><sup>1</sup>H NMR Spectrum:</b>	Consistent with structure
<b>Purity:</b>	≥95.0%
<b>Conclusion:</b>	The product has been tested and complies with the given specifications.

**Caution: Research use only and are not intended for human use.**

Tel: 400-821-0725

E-mail: [product@leyan.com](mailto:product@leyan.com)

Address: No. 1999 Zhangheng Road, Building 3, Zhangjiang High-Tech Park, Shanghai