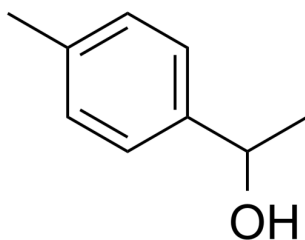


Certificate of Analysis

Compound Information

| | |
|----------------------------|----------------------------------|
| Product Name: | 1-(4-Methylphenyl)ethanol |
| Cat. No.: | 1223716 |
| CAS No.: | 536-50-5 |
| Molecular Formula: | C ₉ H ₁₂ O |
| Molecular Weight: | 136.19 |
| Chemical Structure: | |



Batch Information

| | |
|---------------------|---------------------|
| Batch No.: | Lf0912167670 |
| Storage: | Storage temp. 2-8°C |
| Mfg. Date: | 2022-09-13 |
| Retest Date: | 2025-09-12 |
| Origin: | Shanghai, China |

QC Summary

| | |
|------------------------------------|---|
| Appearance: | Colorless to light yellow (Liquid) |
| ¹H NMR Spectrum: | Consistent with structure |
| Purity (GC): | 98.13% |
| Conclusion: | The product has been tested and complies with the given specifications. |

Caution: Research use only and are not intended for human use.

Tel: 400-821-0725

E-mail: product@leyan.com

Address: No. 1999 Zhangheng Road, Building 3, Zhangjiang High-Tech Park, Shanghai