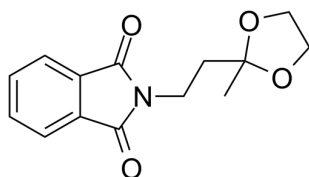


## Certificate of Analysis

### Compound Information

|                            |  |
|----------------------------|--|
| <b>Product Name:</b>       | 2-(2-(2-Methyl-1,3-dioxolan-2-yl)ethyl)isoindoline-1,3-dione |
| <b>Cat. No.:</b>           | 1224401  |
| <b>CAS No.:</b>            | 84764-41-0   |
| <b>Molecular Formula:</b>  | C <sub>14</sub> H <sub>15</sub> NO <sub>4</sub>              |
| <b>Molecular Weight:</b>   | 261.27   |
| <b>Chemical Structure:</b> |  |



### Batch Information

|                     |                     |
|---------------------|---------------------|
| <b>Batch No.:</b>   | Lf0105116852        |
| <b>Storage:</b>     | Storage temp. 2-8°C |
| <b>Mfg. Date:</b>   | 2022-01-05          |
| <b>Retest Date:</b> | 2025-01-04          |
| <b>Origin:</b>      | Shanghai, China     |

### QC Summary

|                                    |   |
|------------------------------------|---|
| <b>Appearance:</b>                 | Light yellow to yellow (Solid)  |
| <b><sup>1</sup>H NMR Spectrum:</b> | Consistent with structure   |
| <b>Purity (NMR):</b>               | ≥97.0%  |
| <b>Conclusion:</b>                 | The product has been tested and complies with the given specifications. |

Caution: Research use only and are not intended for human use.

Tel: 400-821-0725

E-mail: product@leyan.com

Address: No. 1999 Zhangheng Road, Building 3, Zhangjiang High-Tech Park, Shanghai