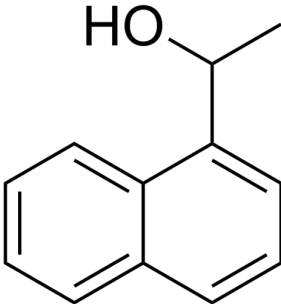
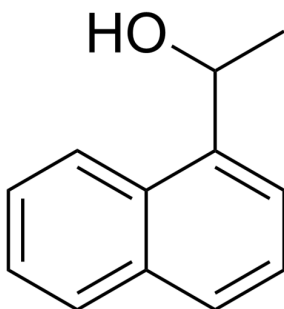


## Certificate of Analysis

### Compound Information

<b>Product Name:</b>	1-(Naphthalen-1-yl)ethanol
<b>Cat. No.:</b>	1224721
<b>CAS No.:</b>	1517-72-2
<b>Molecular Formula:</b>	C <sub>12</sub> H <sub>12</sub> O
<b>Molecular Weight:</b>	172.22
<b>Chemical Structure:</b>	



### Batch Information

<b>Batch No.:</b>	Le1207112159
<b>Storage:</b>	Store at room temperature
<b>Test Date:</b>	2021-12-08
<b>Retest Date:</b>	2026-12-07
<b>Origin:</b>	Shanghai, China

### QC Summary

<b>Appearance:</b>	White to off-white (Solid)
<b><sup>1</sup>H NMR Spectrum:</b>	Consistent with structure
<b>Purity (GC):</b>	99.92%
<b>Conclusion:</b>	The product has been tested and complies with the given specifications.

**Caution: Research use only and are not intended for human use.**

Tel: 400-821-0725

E-mail: [product@leyan.com](mailto:product@leyan.com)

Address: No. 1999 Zhangheng Road, Building 3, Zhangjiang High-Tech Park, Shanghai